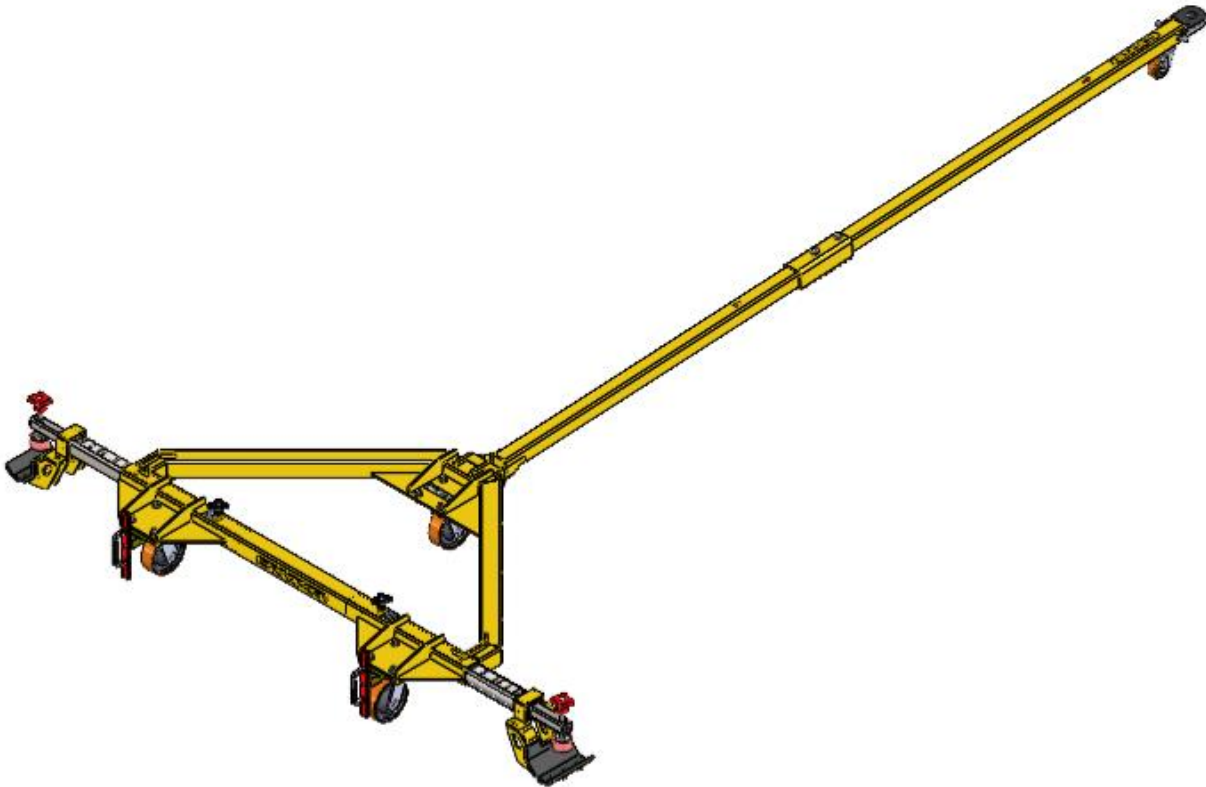


MAINTENANCE MANUAL

CARTMOB

PN: AM-CRT-K01



Aeromob Aeronautical Equipment

CNPJ: 40.061.679/0001-43

Address: Rua Carlos Willy Boehm, 990 - Costa e Silva

ZIP CODE: 89218-325 - Joinville - SC

Phone: +55 (47) 4101-2724 | 9 9937-9077

Website: www.aeromobusa.com

This document is protected by copyright. Total or partial copying of the text, images or tables without authorization from AEROMOB is expressly prohibited, subjecting the offender to applicable civil and criminal proceedings, without prejudice to financial liability for losses and damages caused.

RESIVION

Revision Number	Date
01	Nov/22/2023

To access the updated version of this document, point your device at the QR CODE below.



www.aeromob-industry.com/support-am-crt-k01

INTRODUCTION

This Maintenance Manual must be used in conjunction with the IPC (Illustrated Parts Catalog) part number **IPC AM-CRT-K01**, to maintain the equipment in perfect conditions of use, providing safety and quality in the application.

The procedures determined in this document aim to ensure the correct execution of maintenance actions applicable to this equipment, to guarantee the safety and efficiency of maintenance and operation of the equipment.

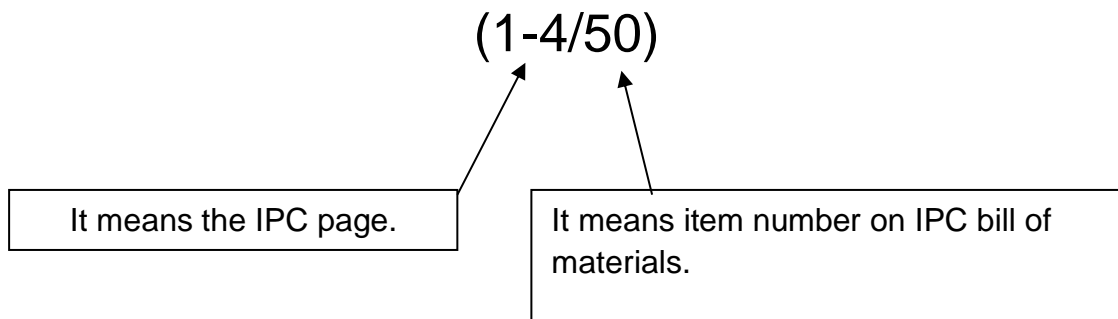
Keeping maintenance up to date will prevent accidents and prevent the product from being stopped due to failures. Cleaning, lubrication, and inspections are basic conditions for proper operation.

NOTE 1: This manual provides execution in the basic kit, without basket.

NOTE 2: For maintenance actions not recommended in this document, do not run without prior Aeromob support for more information: www.aeromob-Industry.com/support-am-ldr-145-K01.

LIST OF ABBREVIATIONS

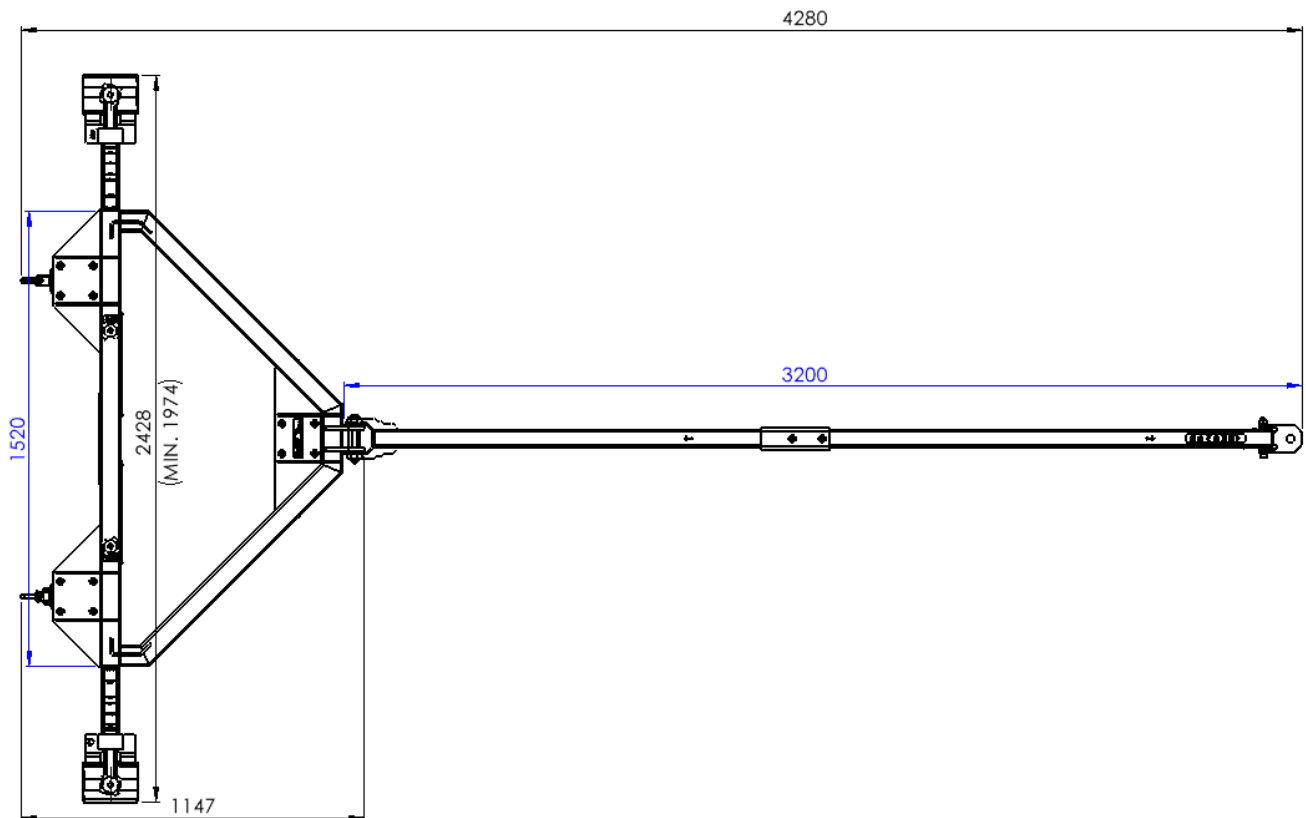
Throughout the manual you will find references such as:



BASIC EQUIPMENT DIMENSIONS

This equipment has the following dimensions:

Weight: 123 Kg



SUMMARY

INSPECTIONS CHECKLIST	01
SUBPART 03 – ROUTINE MAINTENANCE (CLEANING and STORAGE)	02
Equipment Cleaning MM AM-CRT-K01/3-1	03
SUBPART 04 – DISASSEMBLY AND ASSEMBLY	04
Disassembly / Assembly – Separation of Components MM AM-CRT-K01/4-0	05
Disassembly / Assembly – Frame MM AM-CRT-K01/4-1	07
Disassembly / Assembly – Arm Telescope MM AM-CRT-K01/4-2	08
Disassembly / Assembly – Arm Lock MM AM-CRT-K01/4-3	09
Disassembly / Assembly – Towbar MM AM-CRT-K01/4-4	11
SUBPART 05 – TESTING AND CALIBRATION	00
No items applicable to this equipment	00
SUBPART 06 – INSPECTIONS	12
Towbar MM AM-CRT-K01/6-1.....	13
Claw Protection MM AM-CRT-K01/6-2.....	14
Casters MM AM-CRT-K01/6-3.....	15
Caster Lock MM AM-CRT-K01/6-4.....	16

TROUBLESHOOTING.....17

Wear of the Rear Casters MM AM-CRT-K01/TS-118

Wear Protection MM AM-CRT-K01/TS-219

INSPECTIONS LIST

DESCRIPTION	CODE	FREQUENCY
Towbar	MM AM-CRT-K01/6-1	On Condition
Claw Protection	MM AM-CRT-K01/6-2	On Condition
Casters	MM AM-CRT-K01/6-3	On Condition
Caster Lock	MM AM-CRT-K01/6-4	2 years / 1000 cycles

The other components are ON-CONDITION and must be in perfect condition. Only the use of equipment is permitted if the set is complete and in perfect working order. It is expressly prohibited and dangerous to use the equipment with any part, information plate or component missing. If it is necessary to replace any item or component, contact Aeromob. The equipment must contain all items declared in the IPC so that the equipment is fit and safe for operation.

Keeping the equipment clean, in addition to making it more beautiful, is very important for your safety. Dirt can hide abnormalities that could potentially cause failure. During cleaning, it is necessary to check for the presence of cracks, gaps, deformations, noise, misalignment and any other wear or irregular characteristics.

SUBPART 03

ROUTINE PROCEDURES

Equipment Cleaning

MM AM-CRT-K01/3-1

A. Applicable documents

N/A

B. Specials Tools

N/A

C. Materials

- a. Alcohol e clean cotton waste.

D. Routine Spare Parts

N/A

E. Work Setup

- a. Put the equipment in a clean environment with good lighting.

F. Cleaning Procedure

- a. Apply the cotton waste with alcohol to all metal parts of the equipment to remove dirt.

SUBPART 04

DISASSEMBLY AND ASSEMBLY

Disassembly / Assembly – SEPARATION OF COMPONENTS

MM AM-CRT-K01/4-0

A. Applicable Documents

- a. IPC AM-CRT-K01.

B. Specials Tools

N/A

C. Materials

N/A

D. Routine Spare Parts

N/A

E. Work Setup

- a. Put the equipment in a clean environment with good lighting.

F. Disassembly procedure

- a. Release the screw (4-1/20) and remove the Towbar (4-1). See Figure 1.
- b. Release the screws (1-1/8) and handles (1-1/26), remove the arm sets. See Figure 1.

G. Assembly procedure

- a. Replace the Arm sets and re-tighten the screws (1-1/8) and handles (1-1/26).
- b. Replace the Tow and reapply the screw (4-1/20).

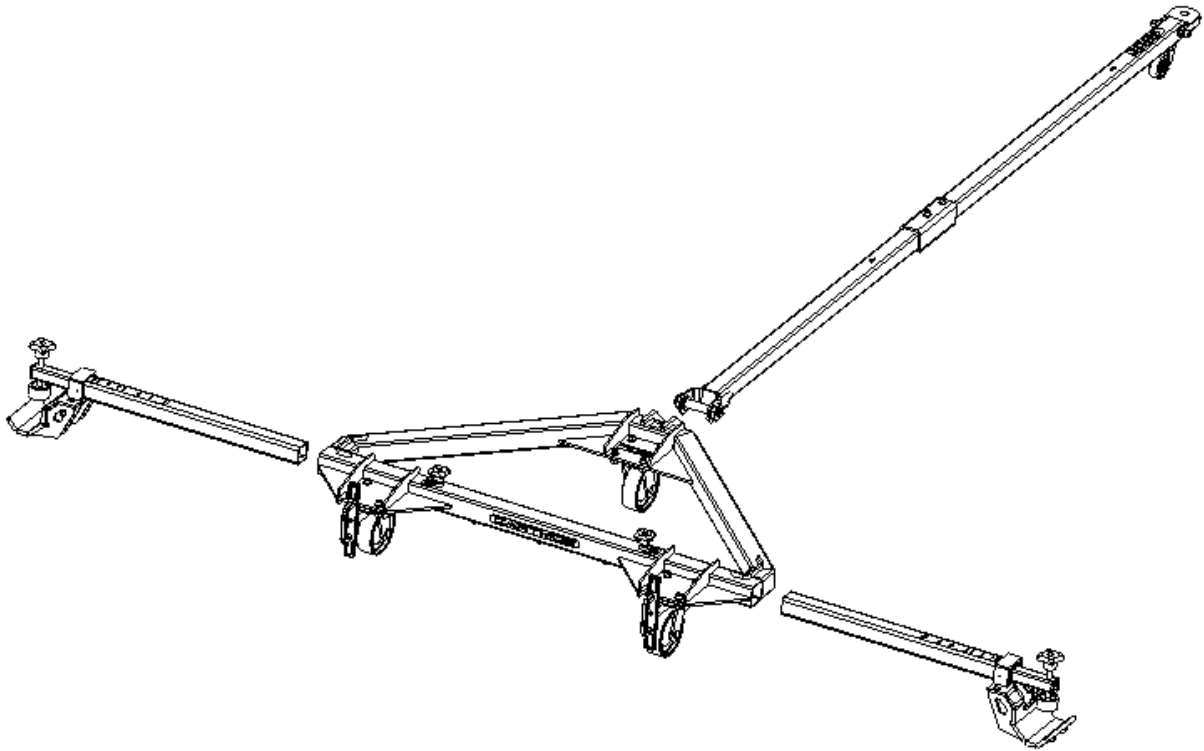


Fig. 1

Disassembly / Assembly - FRAME

MM AM-CRT-K01/4-1

A. Applicable Documents

- a. IPC AM-CRT-K01.

B. Specials Tools

N/A

C. Materials

N/A

D. Routine Spare Parts

N/A

E. Work Setup

- a. Place the equipment on a clean, lined or protected worktop.

F. Disassembly procedure

- a. Release the screws (1-1/18) and remove the Casters (1-1/12).
- b. Release the screws (1-1/24) and remove the Handles (1-1/10).
- c. Release the screws (1-1/25) and remove the Flags (1-1/3).

G. Assembly procedure

- a. Reposition assembly parts Latch and re-fasten screws (1-1/25).
- b. Reposition the Handles (1-1/10) and reapply the screws (1-1/24).
- c. Reposition the Casters (1-1/12) and reapply the screws (1-1/18).

Disassembly / Assembly – TELESCOPE ARM

MM AM-CRT-K01/4-2

A. Applicable Documents

- a. IPC AM-CRT-K01.

B. Specials Tools

N/A

C. Materials

N/A

D. Routine Spare Parts

N/A

E. Work Setup

- a. Place the equipment on a clean, lined or protected worktop.

F. Disassembly procedure

- a. Release the screws (2-1/4) and (2-1/6) and remove the Lock Arms.

G. Assembly procedure

- a. Reposition the Lock Arms and re-tighten the screws (2-1/4) and (2-1/6).

Disassembly / Assembly – LOCK ARMS

MM AM-CRT-K01/4-3

A. Applicable Documents

- a. IPC AM-CRT-K01.

B. Specials Tools

N/A

C. Materials

N/A

D. Routine Spare Parts

N/A

E. Work Setup

- a. Place the equipment on a clean, lined or protected worktop.

F. Disassembly procedure

- a. Release the screws (3-1/9) and remove the Ski Supports (3-1/5).
- b. Release the screws (3-1/10) and remove the Jambs (3-1/6).
- c. Release the counterparts (3-1/11) and remove the Handles (3-1/2).
- d. Release the counterparts (3-1/12) and remove the Gloves (3-1/7).

G. Assembly procedure

- a. Reposition Gloves (3-1/7) and lock with counters (3-1/12).
- b. Thread the Handle (3-1/2) on the Arm (3-1/1) and Threaded Bushing (3-1/3), passing through the Spacer Washer (3-1/4) and lock with the counterparts (3-1/11).
- c. Reposition Jambs (3-1/6) and reapply screws (3-1/10).

- d. Reposition Ski Supports (3-1/5) and reapply screws (3-1/9).

Disassembly / Assembly – TOWBAR

MM AM-CRT-K01/4-4

A. Applicable Documents

- a. IPC AM-CRT-K01.

B. Specials Tools

N/A

C. Materials

N/A

D. Routine Spare Parts

N/A

E. Work Setup

- a. Place the equipment on a clean, lined or protected worktop.

F. Disassembly procedure

- a. Release the screw (4-1/6) and remove the eye (4-1/4). See Figure 1.
- b. Release the screws (4-1/7) and remove the parts (4-1/1) and (4-1/2). See Figure 1.
- c. Release the screws and remove the Casters (4-1/19). See Figure 1.

G. Assembly procedure

- a. Replace the Caster (4-1/19) and press.
- b. Assemble parts (4-1/1) and (4-1/2) and re-fasten screws (4-1/7).
- c. Reposition the Eye (4-1/4) and reapply the screw (4-1/6).

SUBPART 06
INSPECTIONS

INSPECTION - TOWBAR

MM AM-CRT-K01/6-1

A. Applicable Documents

- a. IPC AM-CRT-K01.

B. Specials Tools

N/A

C. Materials

N/A

D. Routine Spare Parts

N/A

E. Work Setup

- a. Put the equipment in a clean environment with good lighting.

F. Check procedure

- a. Check the presence of cracks, clearances, deformations, noise, misalignment and any other wear or uneven characteristic.

INSPECTION – CLAW PROTECTION

MM AM-CRT-K01/6-2

A. Applicable Documents

- a. IPC AM-CRT-K01.

B. Specials Tools

N/A

C. Materials

N/A

D. Routine Spare Parts

N/A

E. Work Setup

- a. Put the equipment in a clean environment with good lighting.

F. Check procedure

- a. Check the presence of cracks, clearances, deformations, noise, misalignment and any other wear or uneven characteristic.

INSPECTION - CASTERS

MM AM-CRT-K01/6-3

A. Applicable Documents

- a. IPC AM-CRT-K01.

B. Specials Tools

N/A

C. Materials

N/A

D. Routine Spare Parts

N/A

E. Work Setup

- a. Put the equipment in a clean environment with good lighting.

F. Check procedure

- a. Check the presence of cracks, clearances, deformations, noise, misalignment and any other wear or uneven characteristic.

INSPECTION – CASTER LOCK

MM AM-CRT-K01/6-4

A. Applicable Documents

- a. IPC AM-CRT-K01.

B. Specials Tools

N/A

C. Materials

N/A

D. Routine Spare Parts

N/A

E. Work Setup

- a. Put the equipment in a clean environment with good lighting.

F. Check procedure

- a. Check the presence of cracks, clearances, deformations, noise, misalignment and any other wear or uneven characteristic.

TROUBLESHOOTING

FAILURE LIST

SYMPTOM	EFFECT	POSSIBLE CAUSES	MAINTENANCE CARD
Wear of the Rear Casters	Drag from caster on the floor	Maneuver the Equipment loaded with Helicopter without detaching the locks	MM AM-CRT-K01-TS1
Wear Protection	use time	use time	MM AM-CRT-K01-TS2

Wear of the Rear Casters

MM AM-CRT-K01/TS-1

A. Applicable Documents

- a. IPC AM-CRT-K01

B. Specials Tools

N/A

C. Materials

N/A

D. Routine Spare Parts

N/A

E. Work Setup

- a. Put the equipment in a clean environment with good lighting.

F. Procedure

- a. Check the presence of cracks, clearances, deformations, noise, misalignment and any other wear or uneven characteristic.

Wear Protection

MM AM-CRT-K01/TS-2

A. Applicable Documents

- a. IPC AM-CRT-K01

B. Specials Tools

- a. Hot air gun 1800 W.
- b. Contact glue for rubbers.

C. Materials

N/A.

D. Routine Spare Parts

- a. AM-CRT-145-070 (2-1/5).

E. Work Setup

- a. Perform disassembly of the Arms according to MM AM-CRT-K01/4-3 card.
- b. Place the disassembled Claw on a clean workbench with protection.

F. Procedure

a. Use the thermal blower on the back of the claw (2-1/1) under protection (2-1/5) for 5 minutes to soften the glue and facilitate the detachment of the part, taking care not to overheat the equipment surface. See Figure 2.

b. Clean the surface with alcohol to remove the residual glue.

c. Apply the contact glue to the inside of Protection (2-1/5) and Claw (2-1/1) and wait for 15 minutes before joining the parts. Press firmly.

Note: The replacement of the Protections must be performed by specialized labor, because the use of thermal tools can damage the painting of the equipment.

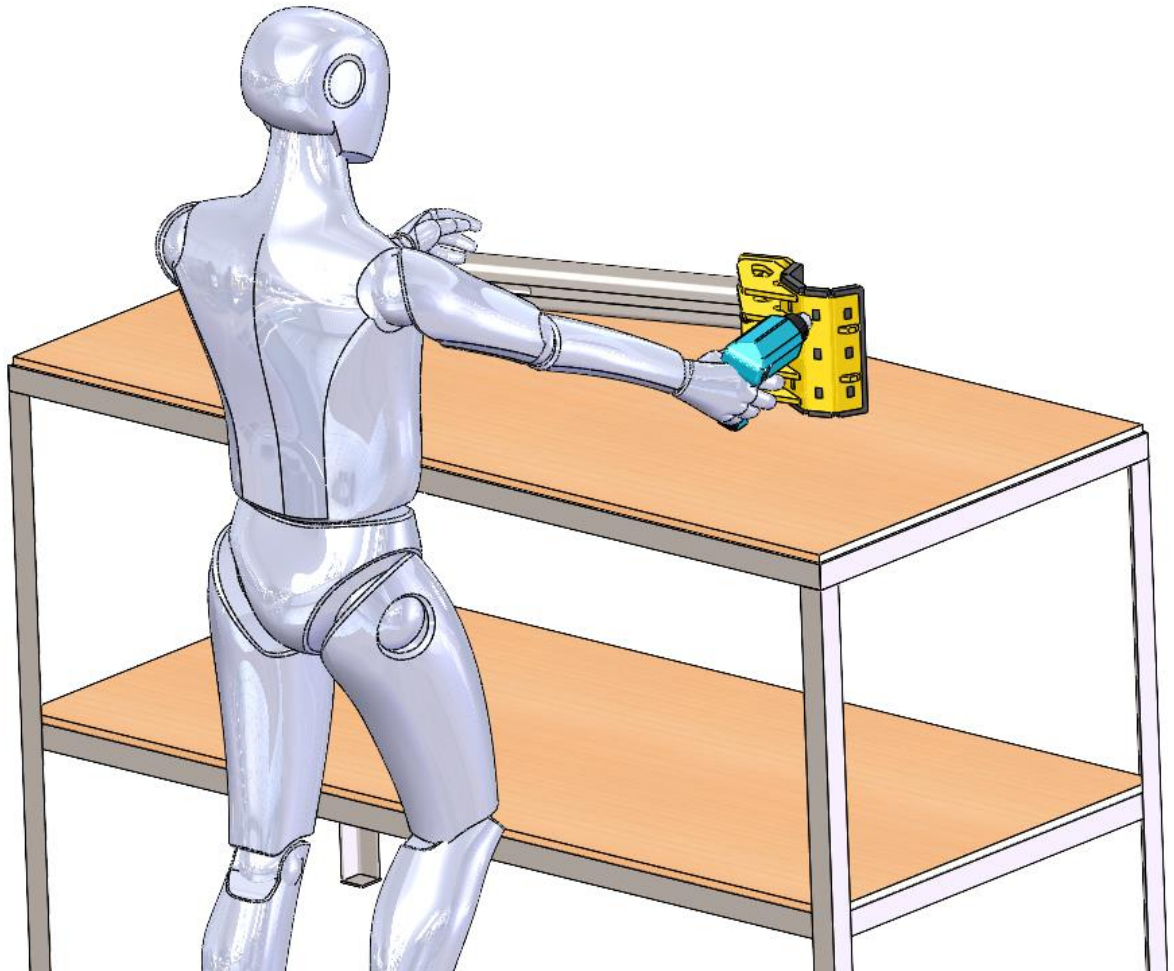


Fig. 2

G. Closing

- a. Wait 24 hours for the glue to cure before the first use of the equipment.